

EG4[®] LL-S 51.2V 100AH

RS485 UPDATE GUIDE



IMPORTANT:

- Read this guide thoroughly before updating the EG4[®] LL-S battery. Failure to do so can result in a soft-bricked BMS.
- Do not disconnect the RS485 cable during the update or have the computer power off. This will lead to a soft-bricked BMS.
- Remove all CAT communication cables between the Battery-Comm ports that are paralleling each battery. Failure to do so will result in a soft-bricked BMS if attempting to RS485 update multiple batteries at the same time.
- Only power on the BMS of the EG4 LL-S battery being updated one at a time. Failure to do so will result in a soft-bricked BMS if attempting to RS485 update multiple batteries at the same time.

Before starting the update, navigate to www.eg4electronics.com, select “Our Products”, scroll to the EG4 LL-S battery product page. To find the latest firmware, locate the “Firmware” section towards the bottom of the product page and select it. Select the firmware file and begin the download. Once the download is complete, extract all files to an easily accessible location. These files will be needed throughout the update.

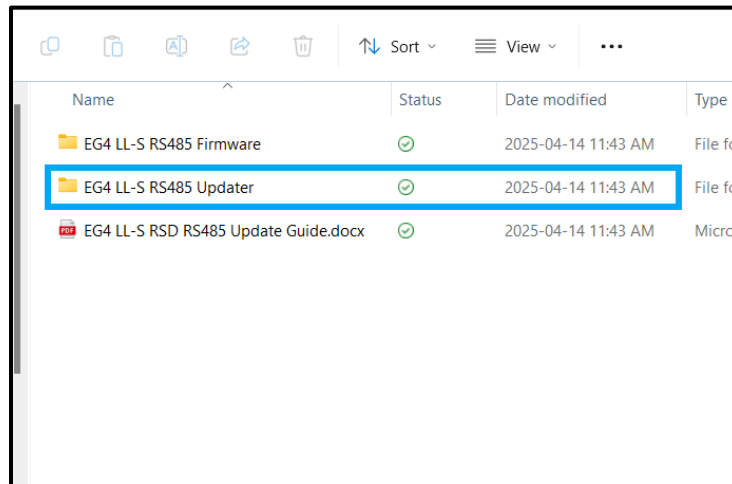
The RS485 LCD Update will always use the RS485 RJ45 Port.



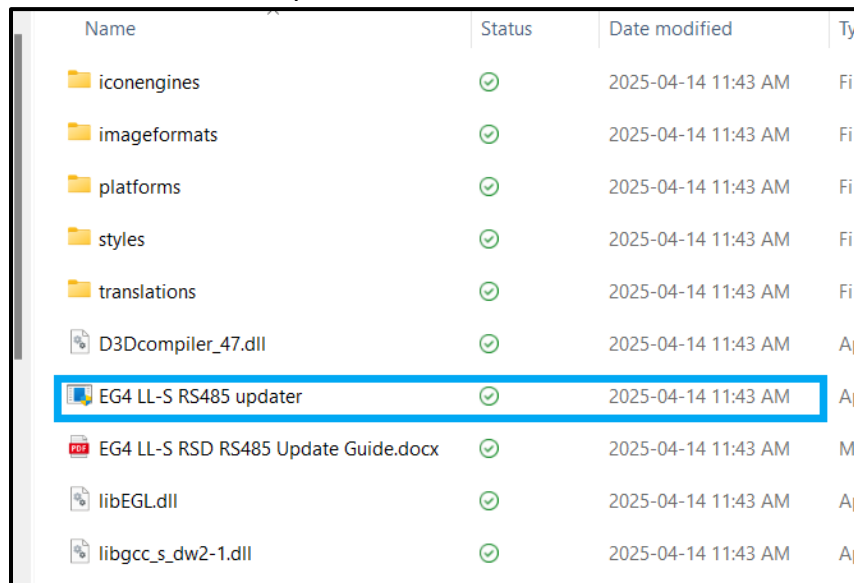
The RS232 BMS Update will always use the Battery-Comm RJ45 Port.

UPDATE INSTRUCTIONS

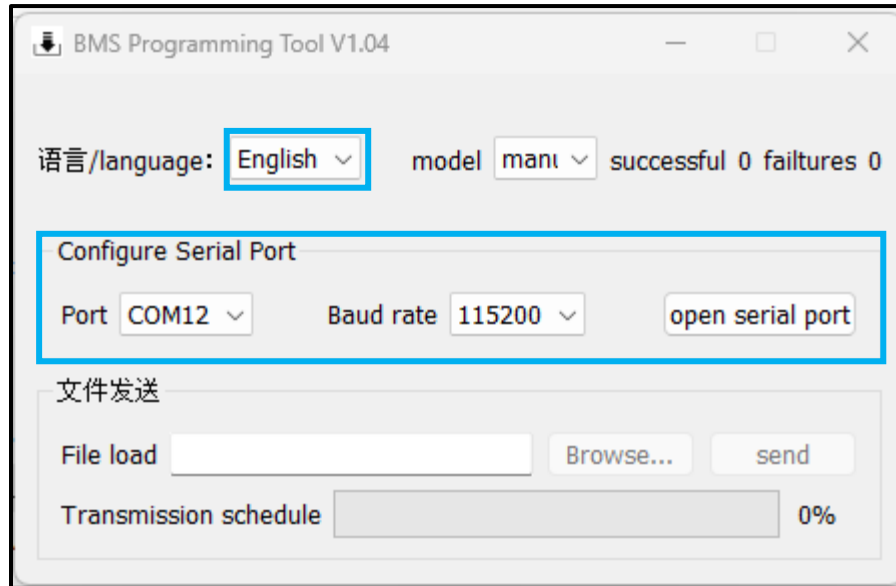
1. Using an RS485 (RJ45 Pins 1-B, 2-A) to USB-A adapter, connect the RS485 port of the battery to a USB-A port on a Windows computer.
2. Set the battery's DIP switch ID to ID:0
3. Power on only the BMS on the EG4 LL-S with the ON/OFF button on the front faceplate.
4. Open the "EG4 LL-S RS485 Update" folder, then open the "EG4 LL-S RS485 Updater" folder.



5. Open the "EG4 LL-S RS485 updater.exe".



6. Change the language to “English” if not already chosen.
7. Confirm that the COM port is set to the correct port number that Windows has assigned to the RS485 cable. Also, confirm that the Baud-Rate is “115200”.
8. Select “open serial port”.

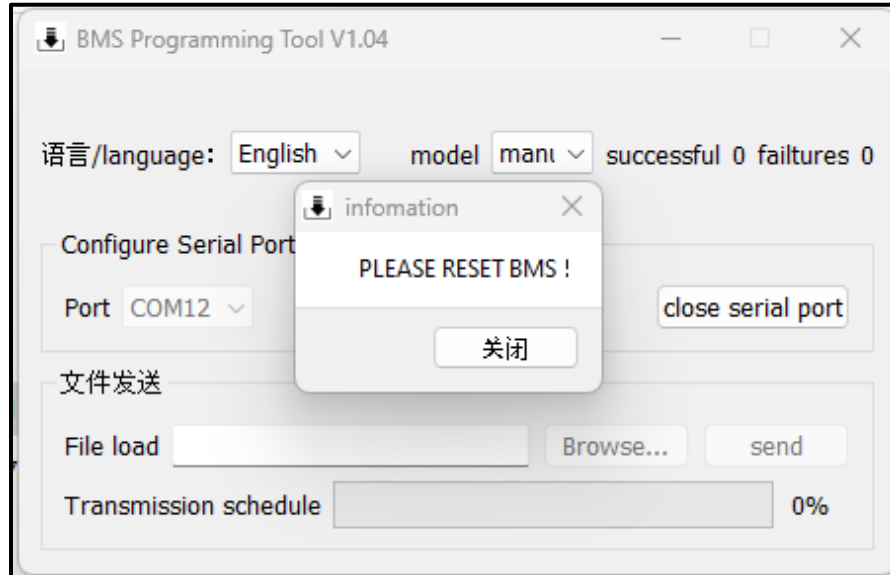


9. "PLEASE RESET BMS!" will now appear. Power OFF the BMS switch, then power it back ON. This box will automatically close whenever the BMS is reset.

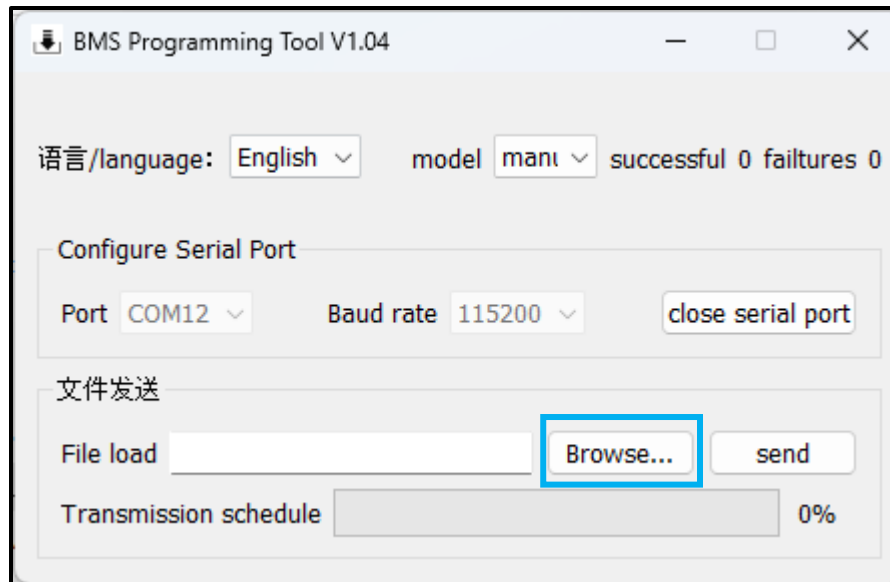


NOTE:

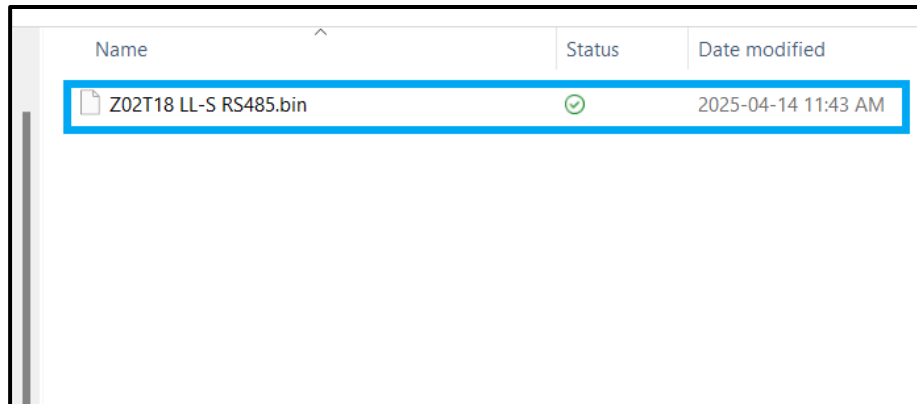
If the textbox does not automatically close, it means the update failed. Restart the update from step 7.



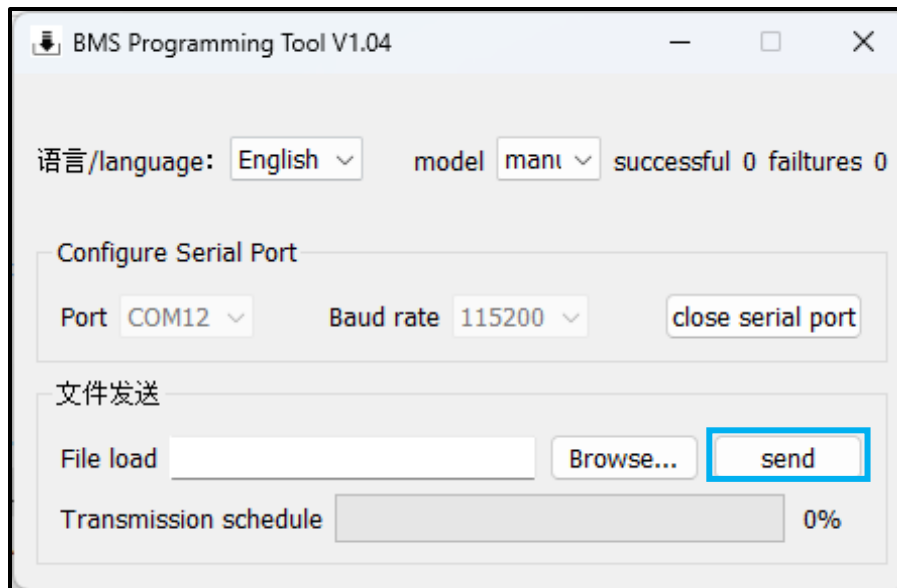
10. The "Browse..." will now appear, select it and select the firmware to flash.



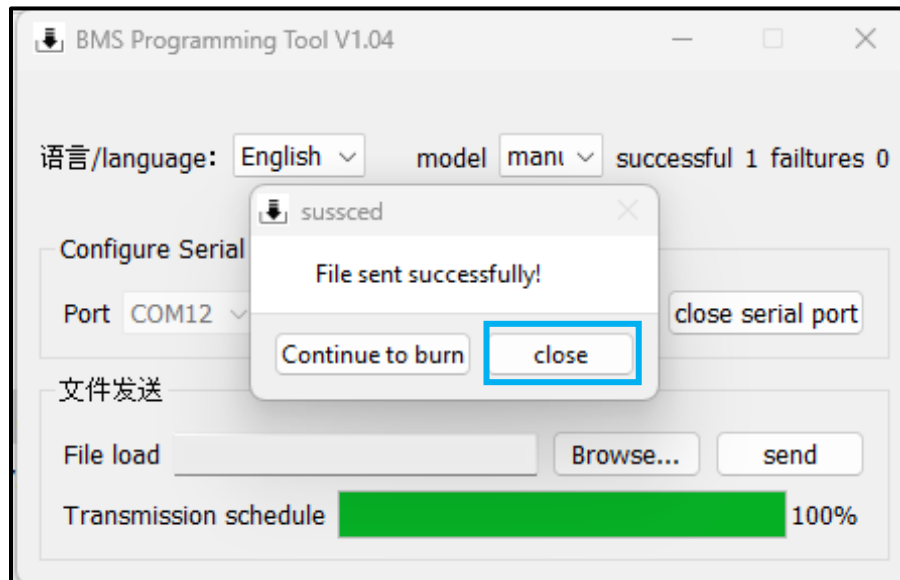
11. File explorer will automatically open, navigate to the “EG4 LL-S RS485 Firmware” folder. Choose the file “EG4 LL-S ID6 RS485 Update for EG4 18kPV.bin”.



12. After the .bin file has been loaded into the updater, select “send”.



13. The “Transmission schedule” will begin to fill to 100%. A box will appear stating “File sent successfully!”. Select close.



14. Finally, select “close serial port”. Close the application.

